

**Anti-CXCL9 Antibody**  
**Catalog # ABO10751****Specification**

---

**Anti-CXCL9 Antibody - Product Information**

Application	WB, IHC-P
Primary Accession	<a href="#">Q07325</a>
Host	Rabbit
Reactivity	Human
Clonality	Polyclonal
Format	Lyophilized

**Description**

Rabbit IgG polyclonal antibody for C-X-C motif chemokine 9(CXCL9) detection. Tested with WB, IHC-P in Human.

**Reconstitution**

Add 0.2ml of distilled water will yield a concentration of 500ug/ml.

**Anti-CXCL9 Antibody - Additional Information**

**Gene ID** 4283

**Other Names**

C-X-C motif chemokine 9, Gamma-interferon-induced monokine, Monokine induced by interferon-gamma, HuMIG, MIG, Small-inducible cytokine B9, CXCL9, CMK, MIG, SCYB9

**Calculated MW**

14019 MW KDa

**Application Details**

Immunohistochemistry(Paraffin-embedded Section), 0.5-1 µg/ml, Human, By Heat<br><br>Western blot, 0.1-0.5 µg/ml, Human<br>

**Subcellular Localization**

Secreted.

**Protein Name**

C-X-C motif chemokine 9

**Contents**

Each vial contains 5mg BSA, 0.9mg NaCl, 0.2mg Na<sub>2</sub>HPO<sub>4</sub>, 0.05mg Thimerosal, 0.05mg NaN<sub>3</sub>.

**Immunogen**

A synthetic peptide corresponding to a sequence at the N-terminus of human CXCL9 (37-51aa NQGTIHLQSLKDLKQ).

**Purification**

Immunogen affinity purified.

**Cross Reactivity**

No cross reactivity with other proteins

**Storage**

**At -20°C for one year. After reconstitution, at 4°C for one month. It can also be aliquotted and stored frozen at -20°C for a longer time. Avoid repeated freezing and thawing.**

**Sequence Similarities**

Belongs to the intercrine alpha (chemokine CxC) family.

**Anti-CXCL9 Antibody - Protein Information**

**Name** CXCL9

**Synonyms** CMK, MIG, SCYB9

**Function**

Cytokine that affects the growth, movement, or activation state of cells that participate in immune and inflammatory response. Chemotactic for activated T-cells. Binds to CXCR3.

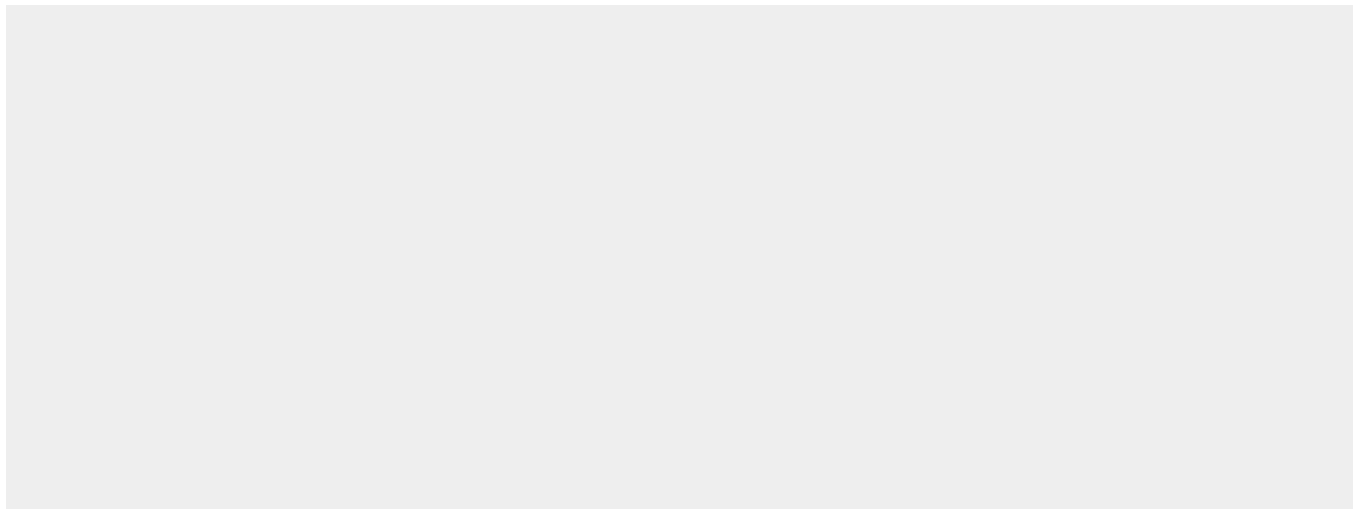
**Cellular Location**

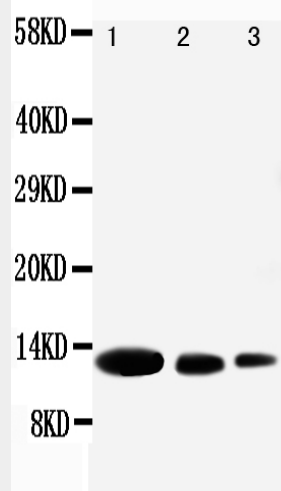
Secreted.

**Anti-CXCL9 Antibody - Protocols**

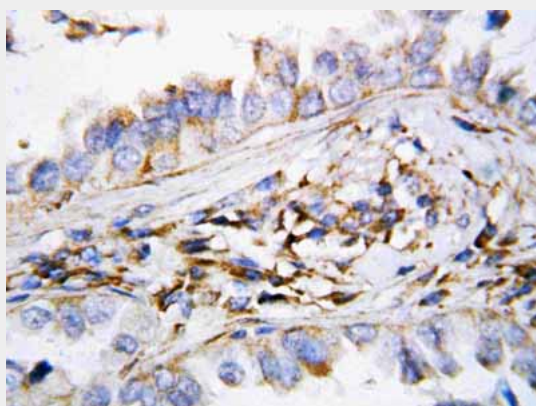
Provided below are standard protocols that you may find useful for product applications.

- [Western Blot](#)
- [Blocking Peptides](#)
- [Dot Blot](#)
- [Immunohistochemistry](#)
- [Immunofluorescence](#)
- [Immunoprecipitation](#)
- [Flow Cytometry](#)
- [Cell Culture](#)

**Anti-CXCL9 Antibody - Images**



Anti-CXCL9 antibody, ABO10751, Western blotting  
Lane 1: Recombinant Human CXCL9 Protein 10ng  
Lane 2: Recombinant Human CXCL9 Protein 5ng  
Lane 3: Recombinant Human CXCL9 Protein 2.5ng



Anti-CXCL9 antibody, ABO10751, IHC(P)  
IHC(P): Human Lung Cancer Tissue

### Anti-CXCL9 Antibody - Background

MIG, also known as CXCL9, is a T-cell chemoattractant inducible by gamma interferon that is a member of the CXC chemokine family of cytokines. This gene is mapped to 4q21. It is noted that, although the best-described activities of the chemokines are as chemotactic factors, chemokines also have an effect on T-cell activation, angiogenesis, and HIV infection. While most CXC chemokines are chemotactic for neutrophils, MIG and INP10 are unusual and similar in being CXC chemokines that are chemotactic for lymphocytes and inactive in neutrophils.